

Quantachrome
INSTRUMENTS

Automated, gravimetric, *dual sample* water vapor sorption analyzer.

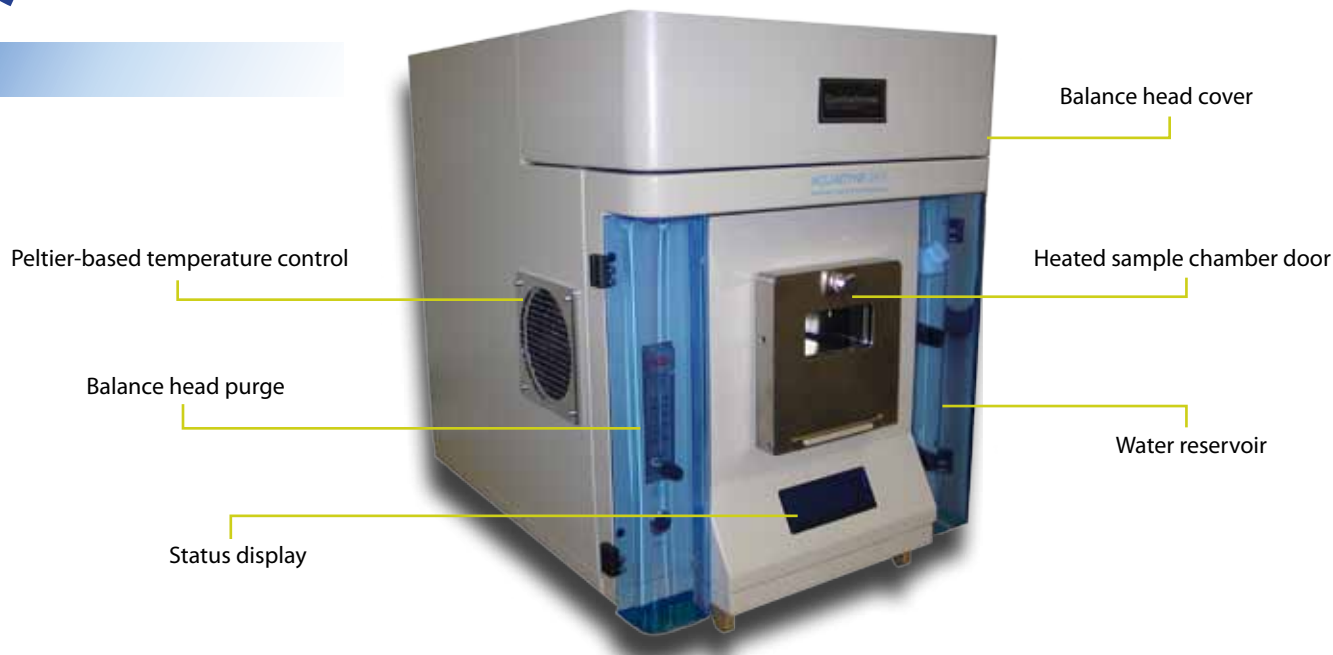


AQUADYNE *DVS*

For pharmaceuticals, food, construction materials, fuel cell research, papers, carbons, and advanced materials.



AQUADYNE *DVS*



Water sorption behavior plays an important role in the development and use of many common and advanced materials. Some examples include:

- Stability of pharmaceutical excipients and drug actives
- Drying and storage of grains
- Texture and shelf life of food products
- PEM fuel cell components
- Mortar, grout and other cementitious materials
- Paper and coatings
- Hydrophobic surface treatments
- Microporous and nanostructured carbons

The *Aquadyne DVS* is a fully automated, gravimetric, dual sample water vapor sorption analyzer. It measures adsorption and desorption isotherms of water vapor both accurately and sensitively, including sorption kinetics, with minimal operator involvement. The weight(s) of one or two sample(s) is / are constantly monitored and recorded as the relative humidity is automatically varied by the blending of dry carrier gas with a saturated gas stream using precision mass flow controllers. The dual balance design allows increased analysis throughput, side-by-side comparison with known or reference materials, or an extended mass range for a single sample..

The independently temperature-controlled balance head environment ensures long term stability. The small sample chamber ensures rapid changes in sample atmosphere conditions when the relative humidity is altered during an analysis. Samples can be pre-dried in situ up to 80° C in a flow of dry gas. The software is available in a 21CFR Part-11 compliant version, and runs under Windows® XP, 2000 and Vista.

MEASUREMENT CAPABILITIES

Isotherms:

Mass change as a function of changing relative humidity, increasing mass during adsorption (increasing RH%), decreasing mass during subsequent desorption (decreasing RH%).

Kinetics:

Time-dependent studies give the rate of sorption.

Effect of Temperature:

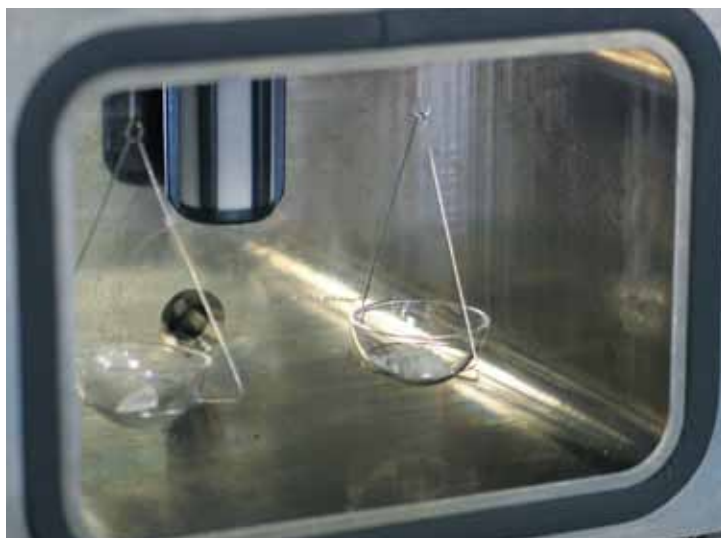
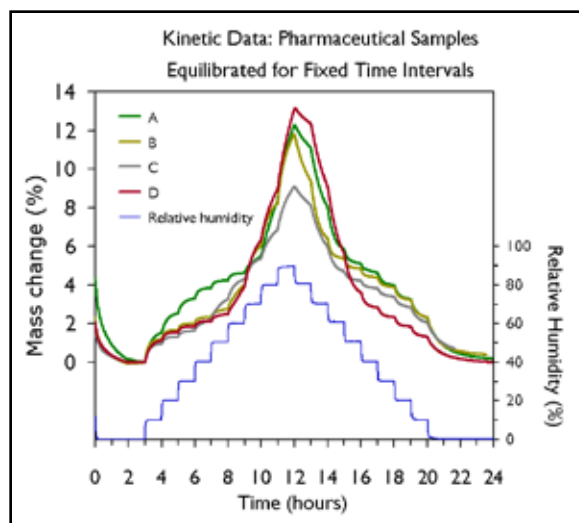
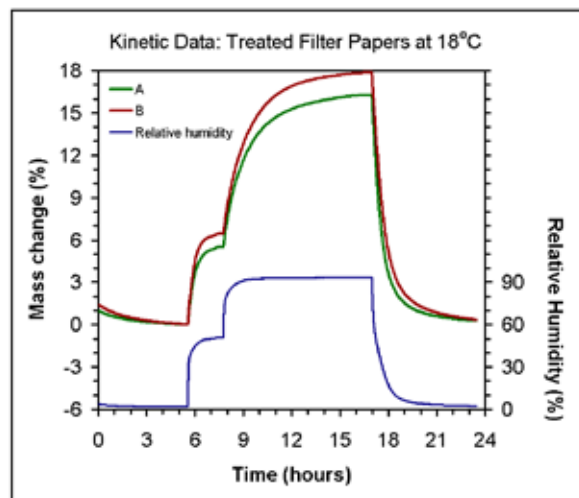
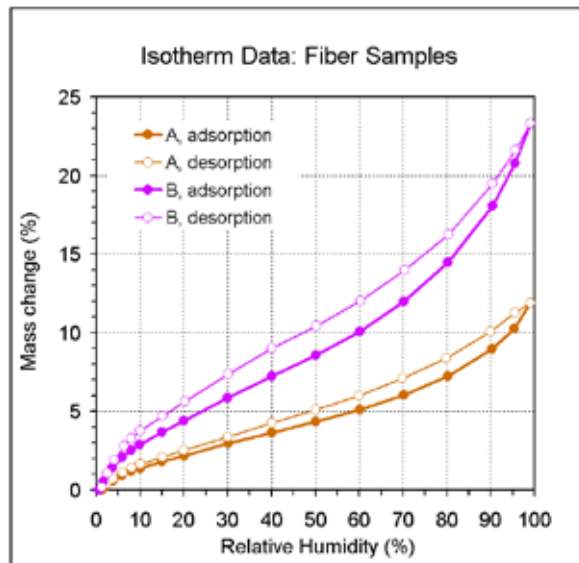
isotherms and kinetics change as a function of temperature. Can be used to yield sorption enthalpies.



AQUADYNE DVS

APPLICATIONS/RESULTS

- Deliquescence: certain salts exhibit the property of dissolving in self-adsorbed water.
- Equilibrium moisture content: quantitatively the amount of water associated (adsorbed/absorbed) with the material under given atmospheric conditions of temperature and relative humidity (organic materials may be subject to molding according to atmospheric humidity, for example).
- Hysteresis working range: adsorption and desorption usually differ by hysteresis - this gives a range of stability in which subsequent sorption cycles produce no change in equilibrium moisture content.
- Hydrophobicity/philicity: the shape of the isotherm reveals relative strength of affinity between water and the surface, due to polar or other chemical interactions.
- Micropore investigations: even hydrophobic materials can take up moisture if their pores are small enough.
- Crystallization phenomena: certain amorphous materials will undergo crystallization as a function of water sorption due to, for example, shifts in glass transition points.
- Sample form: sorption kinetics can be altered by the physical form of a material - powder, granule, pellet, tablet, monolith etc.



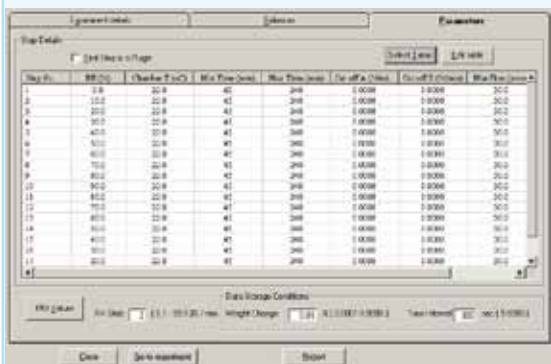


AQUADYNE DVS

SOFTWARE



The Aquadyne DVS is operated through user-friendly software running under Windows®. Sample analyses are easily and quickly set up in terms of target RH with equilibration criteria based on rate of weight change and/or time. The software automatically records kinetic sorption data and isotherm points at user selectable intervals. During the run, data points yet to be recorded can be deleted, added to, or edited for different values (even sample chamber temperature) for real-time optimization.



Both kinetic and isotherm plots for points acquired can be viewed during the analysis, separately for each balance, or combined in an overlay plot. Once analyzed, results can be viewed in tabular and graphical format, and calculations such as BET surface area and heats of adsorption performed. Data can also be exported in a csv format.

SPECIFICATIONS

- Balance heads: 2
- Balances, type: ultrasensitive electronic microbalances
- Balance load capacity(each): 5g
- Balance load capacity(combined): 10g
- Dynamic weighing range(each): -500mg to + 500mg, 0 to +1000mg
- Dynamic weighing range(combined): -1000mg to +1000mg, 0 to + 2000mg
- Weighing resolution: 0.1µg
- RH range: <2% - 98% (depending on temperature).
- RH resolution: 0.1%
- RH accuracy : ± 1.5%
- Sample chamber temperature range: 10 - 80°C
- Sample chamber temperature accuracy/stability: ± 0.2°C
- Balance head temperature : ambient - 85°C (independently controlled)
- Gas flow rates: 0 - 200 cm³/min (mass flow controllers)
- Viewing port / sample chamber door: heated, triple-glazed
- Data acquisition rate: adjustable, up to 12 points per minute
- Sample pan material: silica
- Water reservoir capacity: 46 ml

UTILITIES

- Dimensions(W x D x H): 45cm x 60cm x 55cm(18" x 24" x 22")
- Weight: 60kg(132 lbs.)
- Electrical: 100-230 V~, 50/60Hz - single phase
- Compressed gas: dry air or nitrogen regulated to 8-15 psig
- PC: Windows 2000 or higher operating system with RS232 communications port and 9-pin D-sub connector.

ACCESSORIES

A part from electricity, the only utility the Aquadyne DVS requires is dry air or nitrogen regulated to the required pressure.

Our two-stage regulator assembly includes CGA580 fitting and isolation valve.



Regulator Assembly:
p/n: 01207



Renowned innovator of ideas for today's porous materials community.



Quantachrome Instruments' corporate headquarters in Boynton Beach, Florida.

For over 40 years, Quantachrome's scientists and engineers have revolutionized measurement techniques and designed instrumentation to enable the accurate, precise, and reliable characterization of powdered and porous materials:

- Adsorption/Desorption Isotherms
- Surface Area Measurement
- Pore Size Distribution
- Chemisorption Studies
- Water Sorption Behavior
- Mercury Porosimetry
- True Solid Density
- Tapped Density

Not only are Quantachrome products the instruments of choice in academia, but the technology conceived and developed by our expert staff is applied in industrial laboratories worldwide, where research and engineering of new and improved porous materials is ongoing. Manufacturers also rely on porous materials characterization technology to more precisely specify bulk materials, to control quality, and to isolate the source of production problems with greater efficiency.

Quantachrome is also recognized as an excellent resource for authoritative analysis of your samples in our fully equipped, state-of-the-art powder characterization laboratory.



Quantachrome Instruments' quality management system is certified to be in accordance with ISO9001:2008.

Worldwide Sales and Service

Argentina	Chile	France	Japan	Netherlands	Romania	Sweden	Uruguay
Australia	China	Germany	Jordan	New Zealand	Russia	Switzerland	Uzbekistan
Austria	Colombia	Greece	Kuwait	Norway	Saudi Arabia	Taiwan	Venezuela
Bahrain	Croatia	Hungary	Latin America	Oman	Singapore	Tanzania	Vietnam
Belarus	Cyprus	India	Latvia	Pakistan	Slovak Republic	Thailand	
Belgium	Czech Republic	Indonesia	Lithuania	Peru	Slovenia	Turkey	
Brazil	Denmark	Ireland	Malaysia	Philippines	South Africa	Ukraine	
Bulgaria	Egypt	Israel	Mexico	Poland	South Korea	United Arab	
Canada	Estonia	Italy	Middle East	Portugal	Spain	Emirates	
Central America	Finland	Jamaica	Morocco	Puerto Rico	Sri Lanka	United Kingdom	

The logo for Quantachrome Instruments is centered at the top of the page. It features the word "Quantachrome" in a large, black, sans-serif font, with a red circle and a vertical line intersecting it. Below "Quantachrome", the word "INSTRUMENTS" is written in a smaller, black, all-caps, sans-serif font. The entire logo is enclosed in a white oval with a grey border.

Quantachrome

INSTRUMENTS

CORPORATE HEADQUARTERS

Quantachrome Instruments
1900 Corporate Drive
Boynton Beach, FL 33426 USA
Phone: +1 (561) 731-4999
Fax: +1 (561) 732-9888
E-mail: qc.sales@quantachrome.com

CHINA

Quantachrome Representative Office
M806, Jingbao Garden
183 Andingmenwai Street
Beijing 100011, China
Tel/Fax: +86 10 64400892

EUROPE

Quantachrome GmbH & Co. KG
Rudolf-Diesel Str. 12
85235 Odelzhausen, Germany
Phone: +49 (0) 8134/93240
Fax: +49 (0) 8134/932425

EUROPE

Quantachrome UK Limited
Pale Lane Farm, Pale Lane
Hartley Wintney
Hook RG27 8BA, UK
Phone: +44 (0) 1252819719
Fax: +44 (0) 1252819901

Serving Porous Materials and Powder Characterization Needs Since 1968

www.quantachrome.com

Trademarks and registered trademarks are
the property of their respective owners.

© 2009 Quantachrome Corporation 0909